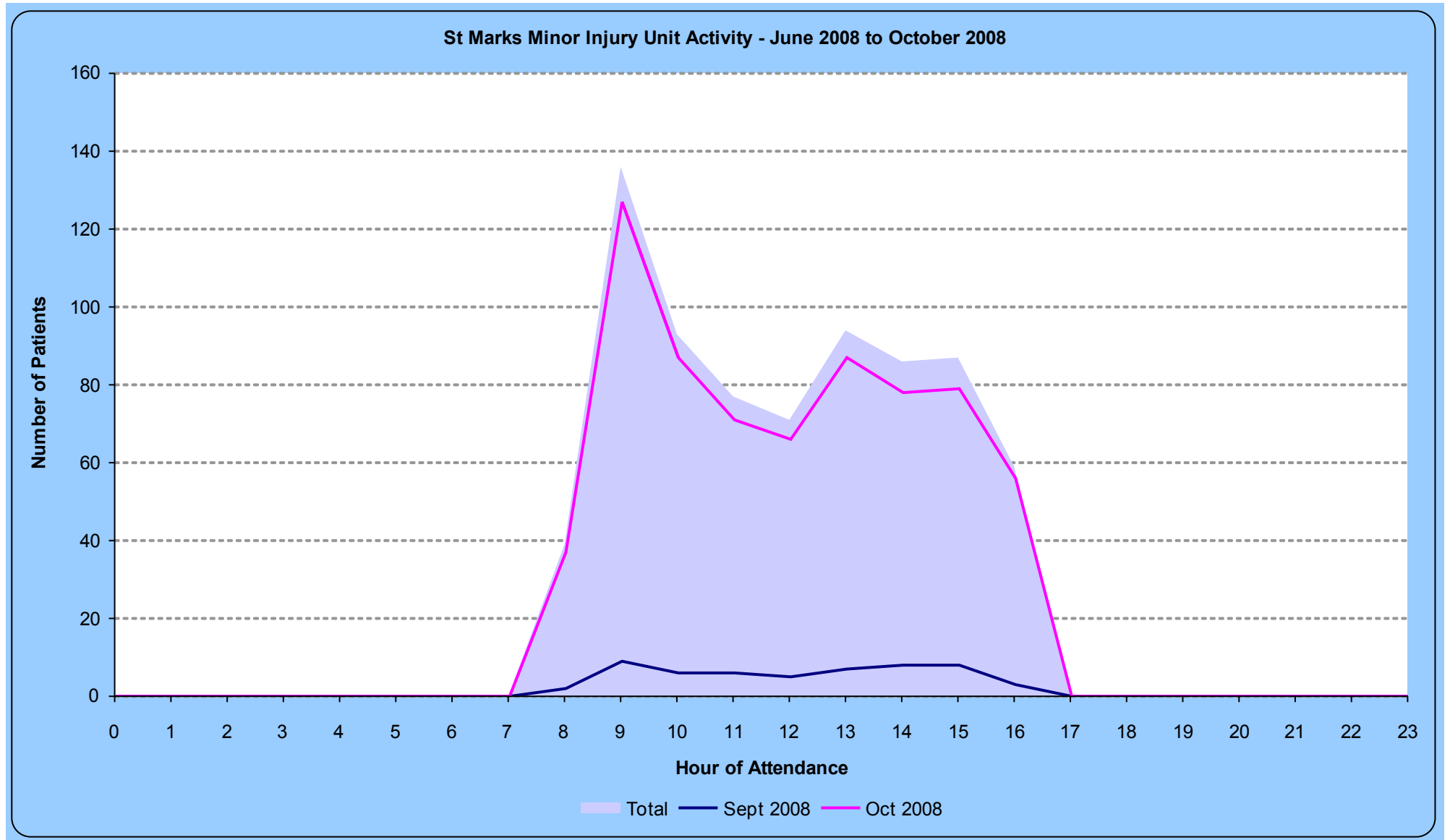


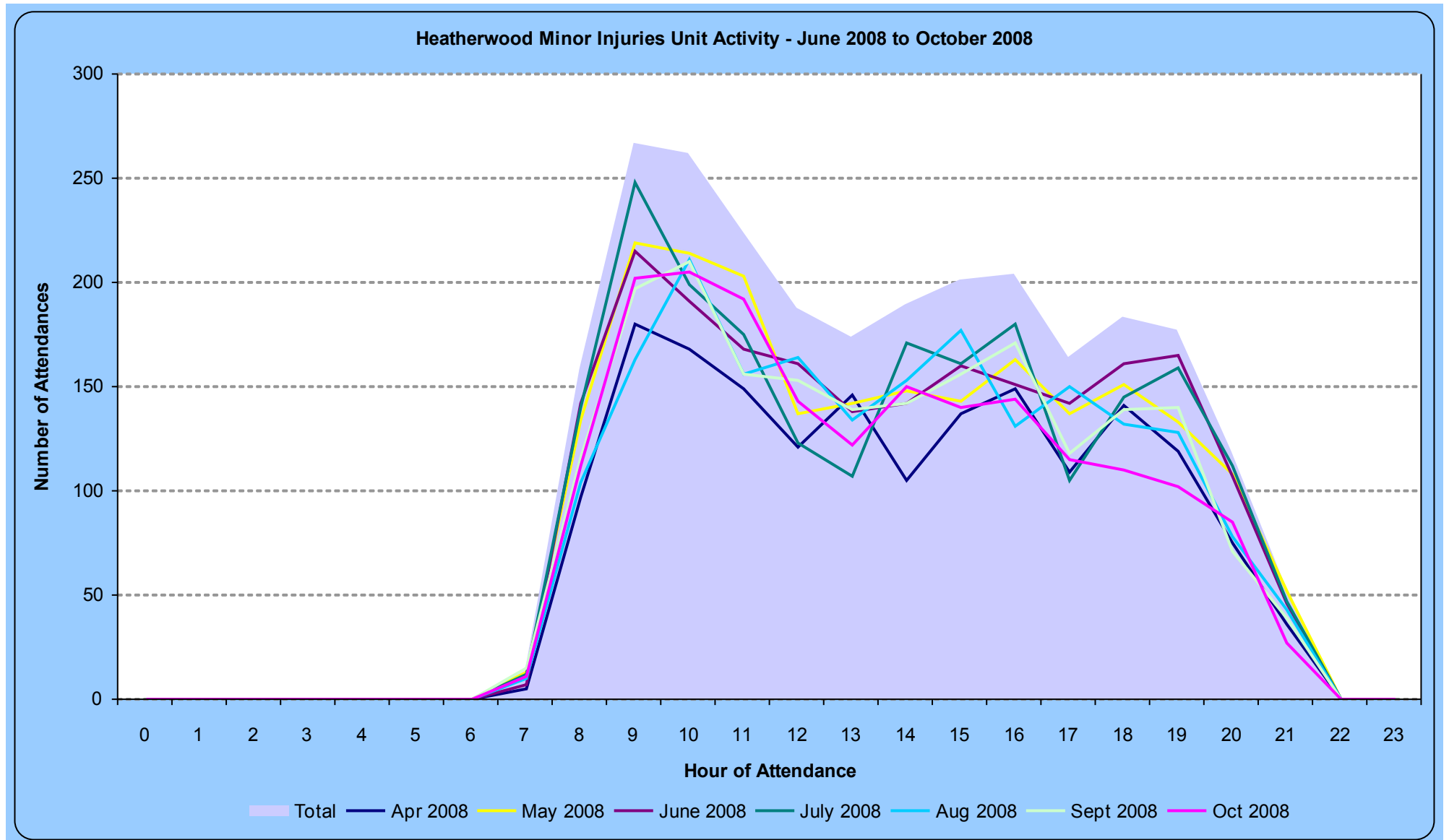
Title: Minor Injuries Unit Attendances - St Marks and Heatherwood

Period: April 2008 to October 2008

Source: PAS via Webi XI A&E Universe

Date: 26/11/2008





01/10/2008	01/10/2008	Thu		4	4	8	4	3	6	2	2		4	4	3	2	3	49	2.6%	-11.0		
	02/10/2008	Fri		3	4	8	5	4	5	4	1	9	2	5	4	1	2	57	3.1%	-3.0		
	03/10/2008	Sat		4	6	4	6	7	5	7	4	4	5	2	5	8	1	68	3.7%	8.0		
	04/10/2008	Sun		2	4	4	8	9	7	4	4	7	4	5	1	2		61	3.3%	-1.0		
	05/10/2008	Mon		2	4	4	12	6	1	4	9	5	5	5		2		59	3.2%	-1.0		
	06/10/2008	Tue		2	12	7	6	3	2	4	2	7	10	1	10	3	1	70	3.8%	10.0		
	07/10/2008	Wed		4	12	15	14	3	3	4	7	10	6	2	7	3	1	91	4.9%	31.0		
	08/10/2008	Thu		6	6	5	8	2	7	3	3	9	4	6	2	2	2	65	3.5%	5.0		
	09/10/2008	Fri		4	5	9	6	4	3	6	3	7	6	6	5	1	1	66	3.5%	6.0		
	10/10/2008	Sat		6	7	4	6	4	4	6	6	5	4	5	2	4		63	3.4%	3.0		
	11/10/2008	Sun		7	4	7	2	7	5	4	4	5	1	3	3	8		60	3.2%	0.0		
	12/10/2008	Mon		3	4	7	5	5	5	6	6	9	3	3	7	3		66	3.5%	6.0		
	13/10/2008	Tue		5	6	7	8	10	5	5	6	6	6	4	1	4	2	75	4.0%	15.0		
	14/10/2008	Wed	1	6	14	9	8	7		4	7	3	4	5	4	3		75	4.0%	15.0		
	15/10/2008	Thu		5	6	5	6	5	3	4	5	5	4		3	1		52	2.8%	-8.0		
	16/10/2008	Fri		6	6	3	6	3	2	6	7	4	7	4		5	2	61	3.3%	1.0		
	17/10/2008	Sat	1	6	11	2	4	3	6	6	3	5	1	1	1	3	1	54	2.9%	-6.0		
	18/10/2008	Sun			9	5	7	3	5	6	4	4		2	2	2		49	2.6%	-11.0		
	19/10/2008	Mon	2		5	5	5	6	5	7	7	2	6	5	1	1	3	60	3.2%	0.0		
	20/10/2008	Tue		5	10	4	7	7	7	8	7	4	4	4	7		2	76	4.1%	16.0		
	21/10/2008	Wed	1	1	15	13	11	8	3	3	2	5	3	5	4	5	2	81	4.4%	21.0		
	22/10/2008	Thu		5	4	5	5	6	3	7	6	1	2	6	1	1		52	2.8%	-8.0		
	23/10/2008	Fri	1	5	7	6	5	1	4	6	8	4	4	2	5	3		61	3.3%	1.0		
	24/10/2008	Sat		3	4	5	5	4	4	3	4	2	3	6	3	2	1	49	2.6%	-11.0		
	25/10/2008	Sun		3		10	4	4	5	7	2	5	4	2	3	2	2	53	2.8%	-7.0		
	26/10/2008	Mon	1	3	2	10	3	4	4	4	2	3	2		2	3		43	2.3%	-17.0		
	27/10/2008	Tue		2	7	5	6	4	3	6	4	3	3	5	4	2		54	2.9%	-6.0		
	28/10/2008	Wed	2	1	14	12	9	5	3	4	4	9	2	2	5	1		73	3.9%	13.0		
	29/10/2008	Thu		3	3	8	5	4	1	2	4			4	2	4	1	41	2.2%	-19.0		
	30/10/2008	Fri		3	4	5	2		3	4	2	1	5	2	4	1		36	1.9%	-24.0		
	31/10/2008	Sat	2	3	3	4	4	2	3	4	5	1	1	4	1	3		40	2.2%	-20.0		
	01/10/2008 Total			11	112	202	205	192	143	122	150	140	144	115	110	102	85	27	1860			
	Grand Total			73	845	1424	1398	1199	1002	928	1011	1074	1089	876	979	946	636	290	13770			

Hospital	St Marks
-----------------	-----------------

Month	Arrival Date	Day of Arrival	Hour of Arrival												Grand Total	% of Month	vs Average	Outside Norm		
			8	9	10	11	12	13	14	15	16	17	18	19						
01/09/2008	29/09/2008	Tue	1	7	3	4	3	5	5	4	1						33	61.1%	6.0	
	30/09/2008	Wed	1	2	3	2	2	2	3	4	2						21	38.9%	-6.0	
01/09/2008 Total			2	9	6	6	5	7	8	8	3					54	% of Month	vs Average	Outside Norm	
01/10/2008	01/10/2008	Thu	2	6	2	2	1	1	5	4	3					26	3.8%	-3.9		
	02/10/2008	Fri	4	9	6	6	6	1	5	3	2					42	6.1%	12.1		
	03/10/2008	Sat	1	7	5	5	2	4	6	3	3					36	5.2%	6.1		
	06/10/2008	Tue	3	10	6	3	5	7	4	7	5					50	7.3%	20.1		
	07/10/2008	Wed	2	6	3	3	4	6	4	4	3					35	5.1%	5.1		
	08/10/2008	Thu	2	1	8	2	6	1		4	3					27	3.9%	-2.9		
	09/10/2008	Fri	1	5	5	1	1	3	5	5	5					31	4.5%	1.1		
	10/10/2008	Sat	3	5	2	1	5	4	6	3	2					31	4.5%	1.1		
	13/10/2008	Tue	3	9	6	4	2	10	4	5	3					46	6.7%	16.1		
	14/10/2008	Wed	3	3	1	4	3	6	1	4	2					27	3.9%	-2.9		
	15/10/2008	Thu	1	3	2	5		5	7	3	3					29	4.2%	-0.9		
	16/10/2008	Fri	3	10	3	3	2	3	4	4	2					34	4.9%	4.1		
	17/10/2008	Sat	2	5		4	1	2	2	4	2					22	3.2%	-7.9		
	20/10/2008	Tue	1	5	6	5	2	7	3	4	1					34	4.9%	4.1		
	21/10/2008	Wed	2	5	2	3	1	2	4	1	2					22	3.2%	-7.9		
	22/10/2008	Thu		4	4	1	2	6	2	4	3					26	3.8%	-3.9		
	23/10/2008	Fri		8	4	1	2	4	2	3	3					27	3.9%	-2.9		
	24/10/2008	Sat		3	2	3	1	4	3	4	1					21	3.1%	-8.9		
	27/10/2008	Tue	1	4	7	4	5	5		4	2					32	4.7%	2.1		
	28/10/2008	Wed		1	4		4			2	1	3				15	2.2%	-14.9		
	29/10/2008	Thu	1	3	3	4	4	1	2	2	2					22	3.2%	-7.9		
	30/10/2008	Fri	1	12	6	1	4	2	3	1	1					31	4.5%	1.1		
	31/10/2008	Sat	1	3		6	3	3	4	2						22	3.2%	-7.9		
	01/10/2008 Total			37	127	87	71	66	87	78	79	56				688				
	Grand Total			39	136	93	77	71	94	86	87	59				742				